

Lisbellaw Primary School is committed to the provision of a high quality of education for all pupils and high standards to all whom it serves. We believe that the fostering of trust and good relationships with the Parents/Guardians of our pupils is very important. A close partnership between home and school should help ensure that all our children learn and develop to their full potential in a caring, supportive and safe environment. Good communication is essential if we are to achieve this. If you have any concerns about any aspect of your son/daughter's care/education please contact the school and arrange a meeting with the Principal and/or the class teacher.

We would also encourage you attend our Parent/Teacher meeting so that members of staff can keep you informed regarding your child's progress and development.

If you have any concerns about your child's safety you should use the following procedure to make a complaint:

I have a concern about my child's safety.



I can talk to the Teacher.



If I am still concerned I can talk to the Designated Teacher for Child Protection (*Mrs R Coalter*)



If I am still concerned I can talk to the Principal (*Mrs I Logan*)



If I am still concerned I can talk/write to the Chairman of the Board of Governors of (*Rev B Kerr*)



At any time I can talk to the :Social Worker in Gateway team tel: 028 71314090 or the PSNI Public Protection Unit tel: 0845 600 8000

This leaflet can only provide a summary of our child protection policy and a the more detailed policy is available on request from the school office or it can be accessed on the schools web site. Contact details are provided below. This policy will be reviewed annually and issued to parents at least once every 2 years. Should you have any questions to ask or comments to make in relation to the content of this leaflet or the full policy please do not hesitate to contact the Designated Teacher for Child Protection

The following are a list of other related pastoral care policies which are also available from the school (or on web site).

[Behaviour Policy](#)
[Anti-Bullying](#)
[Use of Reasonable Force/Safe Handling](#)
[Special Educational Needs](#)
[Educational Visits](#)
[First Aid and the Administration of Medicines](#)
[Health and Safety Policy](#)
[Sex Education](#)
[Use of Mobile Phones/Cameras](#)
[ICT and access to the internet](#)
[Intimate Care](#)
[Comments/Complaints](#)

Other Useful Contact Numbers including school address, telephone number and web-site details

School Address: 18 Cloghcor Road, Lisbellaw,
Co Fermanagh BT94 5BEW

Tel Number: 028 66387214

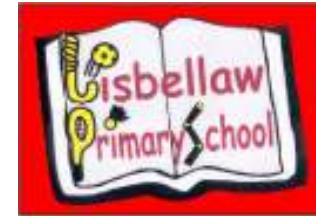
E-Mail Address: ilogan422@c2kni.net

Web Address: www.lisbellawprimary.org.uk

Social Services Gateway Team: 028 71314090
PSNI Public Protection Unit: 0845 600 8000

Mission Statement
“Learning for the Future”

PASTORAL CARE



Child Protection Policy (Summary)

(Information for Parents)

Lisbellaw Primary School

Mission Statement

“Learning for the Future”

Aims

Lisbellaw Primary School aims to establish a caring environment within which the academic, personal, social and spiritual potential of each child will be developed. The pastoral dimension permeates all school activities.

We have a primary responsibility for the care, welfare and safety of the pupils in our charge and we will carry out this duty through our pastoral care policy which aims to provide a caring, supportive and safe environment.

Principles

Our Child Protection Policy is based on the following Principles:

- The child's welfare must always be paramount.
- Children must always have a right to be heard, to be listened to and to be taken seriously.
- Parents/carers have a right to respect but a proper balance must be struck between ensuring this and protecting children.
- Every child has the fundamental right to be safe from harm and have proper care given to their physical, emotional and spiritual well being.

School Safeguarding Team

Members of the Schools Safeguarding team are:

The Chair of the Board of Governors (Rev B Kerr)

The Designated Governor for Child Protection (Rev B Kerr)

The School Principal (Mrs I Logan)

The Designated Teacher for Child Protection (Mrs R Coalter)

The Deputy Designated Teacher for Child Protection (Mrs I Logan)

Members of the team have clear roles and responsibilities in relation to the safeguarding of pupils within the school and these are detailed in our full child protection policy.

Procedures

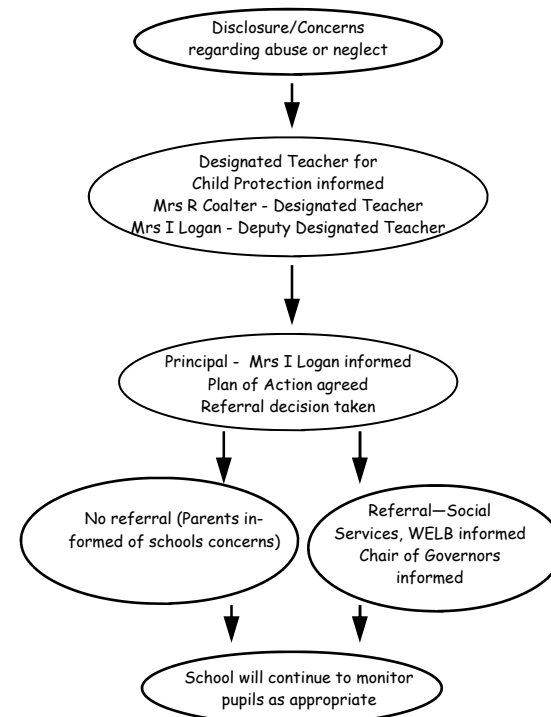
In order to protect our pupils we at Lisbellaw Primary School will adhere to the following procedures.

- All staff teachers, non-teaching staff and volunteers will have clear guidance on the action which is required where abuse or neglect is suspected.
- All staff and volunteers will undergo a vetting procedure in order to maintain the highest standard of professional care towards our children.
- All teaching and ancillary staff will attend a Child Protection training programme organised by the Designated Teacher.
- Children will be supervised at all times while in the school grounds.
- When it is necessary to change the child's normal travel arrangements permission will only be given on receipt of a written request or telephone call by a parent/guardian.
- All visitors to the school must report to the Secretary's office.
- Bullying is a highly distressing and damaging form of abuse and will be responded to sensitively in our school. All staff will be vigilant at all times and will aim to prevent bullying by raising an awareness with pupils, staff and parents about bullying, its forms and consequences.

All staff at Lisbellaw Primary School will ensure that all children are aware of who they can talk to if they are sad, worried, being bullied or have any other concerns.

The Designated Teacher for Child Protection is Mrs R Coalter and the deputy, Mrs I Logan will assume responsibility in her absence.

The Department of Education of Northern Ireland requires all those working in education to co-operate fully with social services and other agencies to protect children. It is therefore our duty to refer if there is a concern about any form of abuse. The following diagram shows the procedures we are required to follow as described in The Department of Education of Northern Ireland publication 'Pastoral Care in School – Child Protection (1999)'.



It should be noted that information given to members of staff about possible child abuse cannot be held 'in confidence'. In the interests of the child, staff may need to share this information with other professionals. However, only those who need to know will be told.

The school will update the school's Child Protection Policy and procedures in the light of any further guidance and legislation as necessary, and review it annually.